



# THE UNIVERSITY OF DUISBURG-ESSEN

Thinking in terms of possibilities instead of limitations.

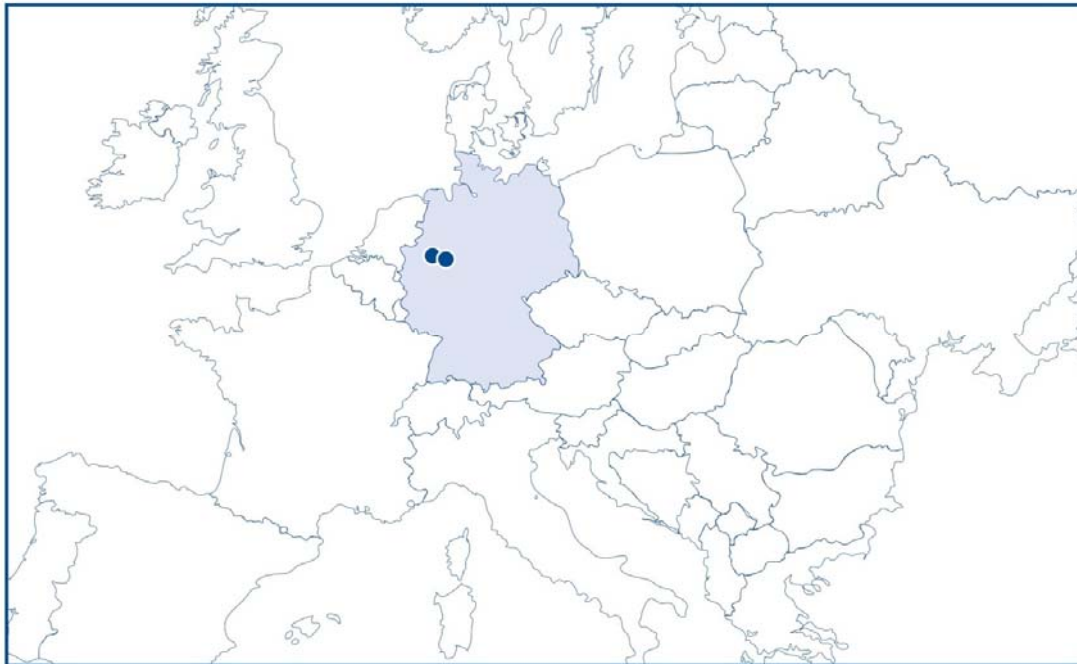
10-2023

UNIVERSITÄT  
DUISBURG  
ESSEN

*Offen im Denken*

## Campus Locations

# In the heart of Europe



# Duisburg



- around 500.000 inhabitants
- the most important steel production site in Europe
- logistical centre of Germany, with the largest inland port in Europe
- home of the Wilhelm Lehmbruck-Museum

# Essen



- around 580.000 inhabitants
- the cultural and economical centre of the Rhine-Ruhr region as well as a hotspot of the service industries
- European Capital of Culture RUHR.2010
- European Green Capital 2017

## Good Connections



- a special shuttle bus travels the 20-km distance between the campuses
- the campuses in Essen and Duisburg are connected by the "Ruhr Bicycle Expressway", the last section of which is currently under construction
- motorists take Route A40, traditionally known as the "Ruhr Expressway"

# History



- **August 1, 1972**  
foundation of two universities (Gesamthochschulen) in the cities Duisburg and Essen
- **January 1, 2003**  
merger of the two universities and foundation of the University of Duisburg-Essen (UDE)
- **March 12, 2007**  
foundation of the University Alliance Ruhr (UA Ruhr), a strategic research alliance with neighboring universities
- **2020**  
UDE holds place 16 in the Times Higher Education Ranking of the world's 250 best young universities and ranks first among the German universities evaluated.  
(Source: THE-Ranking 250 under 50)

# Open-Minded



We are a young, innovative university located in the heart of the Ruhr metropolis. We pride ourselves in outstanding research and teaching, think in terms of opportunities rather than limitations and develop ideas with a view to the future.

Diversity is an integral part of our culture as we promote potential and are committed to upholding genuine equity in education.

# 12 Departments

- Humanities
- Social Sciences
- Educational Sciences
- Economics
- Business Administration
- Mathematics
- Physics
- Chemistry
- Biology
- Engineering
- Medicine
- Computer Sciences (new foundation as of 01.10.2023)



## Overview

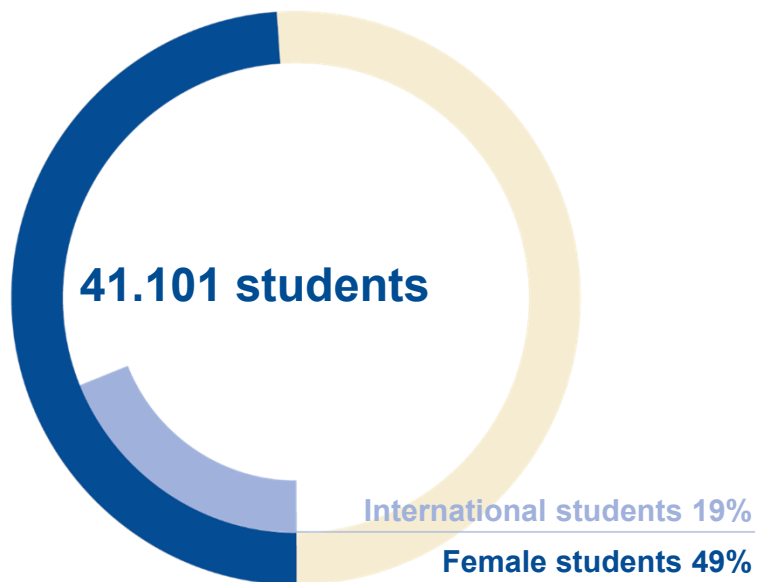
### People at the University

<b>40.772</b>	students
<b>520</b>	professors
<b>4.035</b>	academic staff
<b>1.555</b>	employees technical support and administrative services (excluding Faculty of Medicine)

### Budget

<b>406,7 Mio. Euro</b>	Public Funds State of North Rhine-Westphalia, of which,
<b>107,7 Mio. Euro</b>	is for the Faculty of Medicine
<b>157,0 Mio. Euro</b>	Third-Party Funds, of which
<b>51,8 Mio. Euro</b>	is for the Faculty of Medicine

# Students



reference period: WS 2021/22

## Graduates



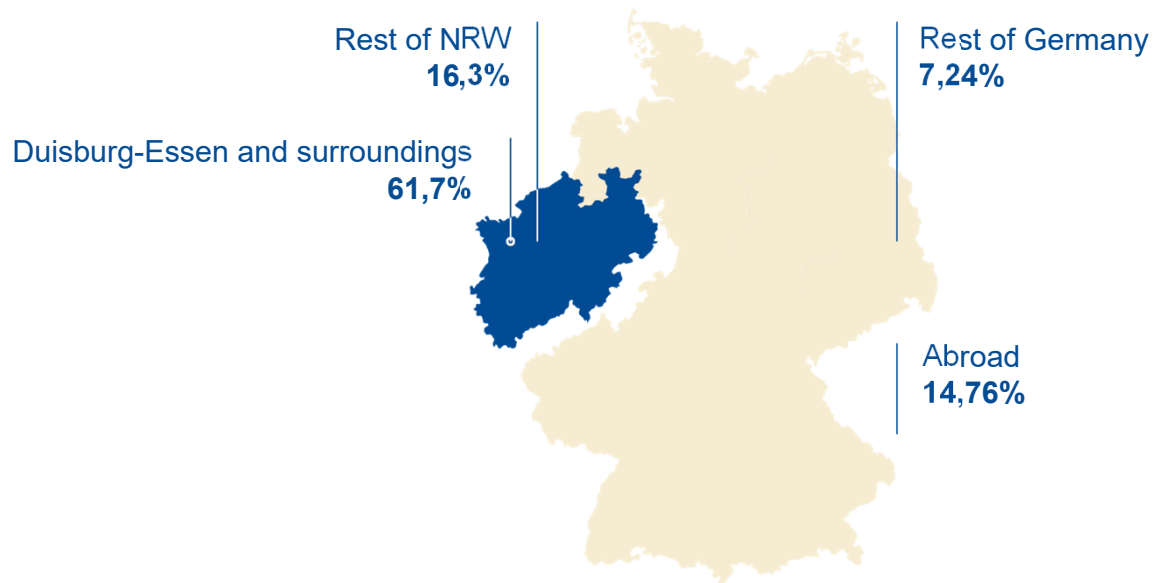
## first-year students



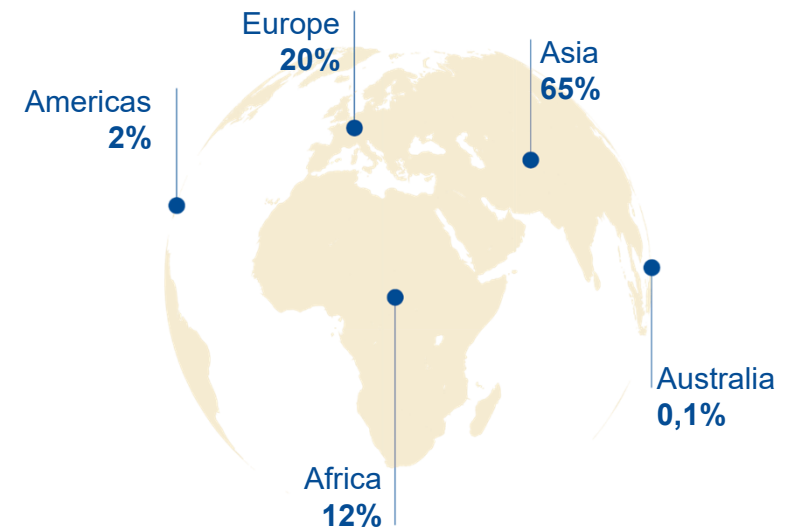
reference period: WS 2021/22 + SS 2022

# Students

## origin of the students



## incoming students with foreign entrance qualifications



reference period: WS 2021/22

# Students by Department

■ Humanities	<b>7.575</b>	■ Mathematics	<b>2.356</b>
■ Social Sciences	<b>3.317</b>	■ Physics	<b>745</b>
■ Educational Sciences	<b>2.722</b>	■ Chemistry	<b>1.376</b>
■ Economics	<b>5.142</b>	■ Biology	<b>1.691</b>
■ Business Administration	<b>2.829</b>	■ Engineering	<b>10.513</b>
		■ Medicine	<b>2.835</b>

## Main Research Areas

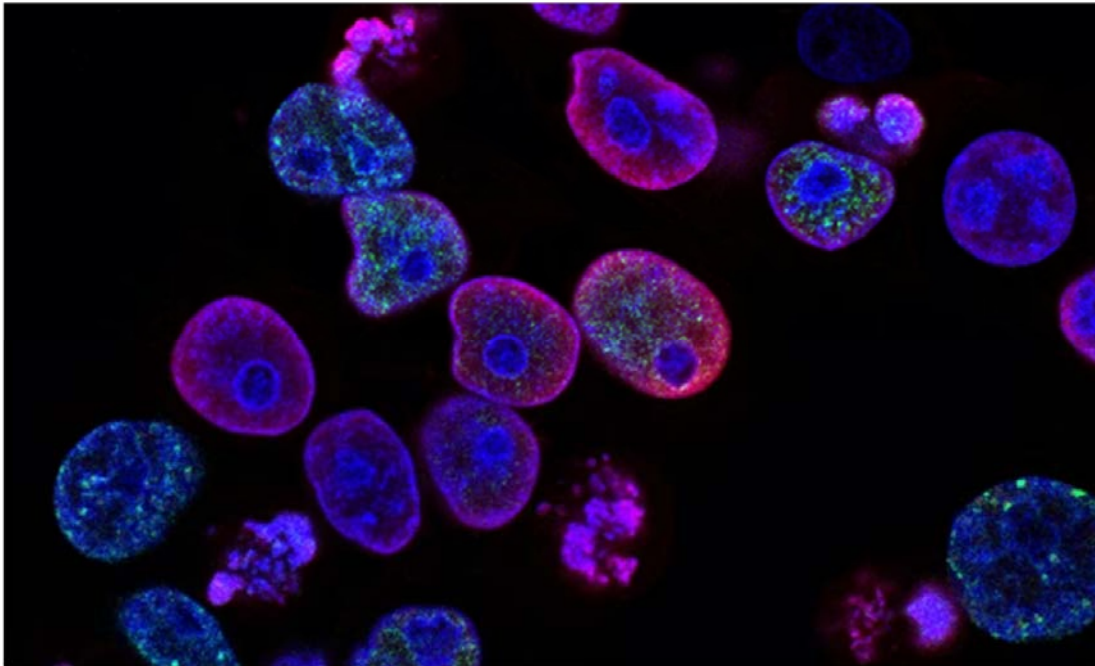
- Nanosciences
- Biomedical Sciences
- Urban Systems
- Transformation of Contemporary Societies
- Water Research

# Nanosciences



- development of nanostructured functional materials for a broad range of applications in a high-tech research center, special focus on applications in the energy sector
- more than 60 research groups comprising approx. 350 scientists from the fields of chemistry, physics, medicine and the engineering sciences are participating, among other things, in collaborative research centers, research training groups and numerous cooperative ventures with industry
- bachelor's and master's programs in nanoengineering

## Biomedical Sciences



- new diagnostic methods and treatments are being developed in cooperative interdisciplinary projects
- connect the medical research at the Essen University Hospital and the Erwin L. Hahn Institute with the basic scientific research at the Centre for Medical Biotechnology (ZMB)
- the B.Sc. program in medical biology is in especially high demand with 2,700 applicants yearly

# Urban Systems



- in rapidly urbanizing (as well as in shrinking) regions, climate mitigation and adaptation, conservation of natural resources, etc. are important issues
- located in one of the largest heavily populated areas in Europe, all 11 UDE faculties are conducting research to find multi-layered solutions to the problems facing the urban world today
- the Joint Centre aims to establish a leading European center for broad-based urban research, with international visibility, involved in the instruction and training of the next generation of scientists



## Main Research Areas

# Transformation of Contemporary Societies



- patterns of order in society are modified by the displacement, disappearance and persistence of borders between people, nations, markets, etc.
- the multidisciplinary research being carried out by the six institutes at the UDE connects the fields of sociology, educational science, economic science, political science and other disciplines
- Käte Hamburger Kolleg/Centre for Global Cooperation Research

# Water Research



- A sustainable and global water cycle is one of the greatest social challenges of our time.
- How can we succeed in ensuring that water and sanitation facilities are available to all people and that this precious resource is managed sustainably?
- Topics among others: Water treatment and purification, biodiversity and environmental consequences of heavy rainfall

# German Research Foundation (DFG) Programs

- **22 Collaborative research centers SFB/TR**  
(6 lead institution and 16 participating university)  
in Biochemistry, Medicine, Physics and  
Mathematics and Engineering
- **9 Research training groups**  
(6 lead institution and 3 participating university)  
in Medical Biotechnology, Infectious Diseases,  
History, Radiobiology, East Asian Studies,  
Biomedicine and Social Media plus one participation  
in Mathematics
- **21 Research units**  
(6 lead institution and 15 participating university)  
in Engineering, Biology, Social Science, Medicine,  
Physics and Educational Research
- **26 Priority programs**  
(4 lead institution and 22 participating university)  
in Chemistry, Engineering, Mathematics, Mechanics,  
Medicine, Educational Research and Nano sciences

# Inter-Faculty Research Centre

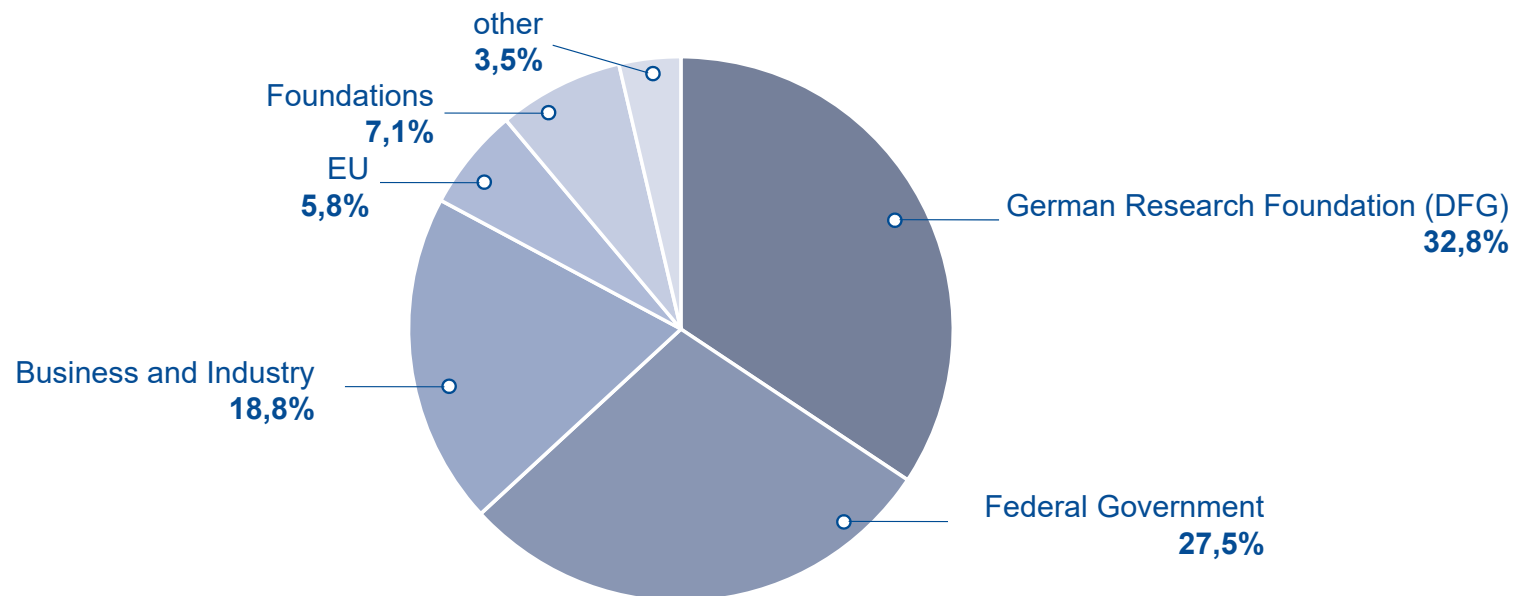
- Center for Nanointegration Duisburg-Essen (**CENIDE**)
- Essen College of Gender Studies (**EKfG**)
- Interdisciplinary Centre for Educational Research (**IZfB**)
- Interdisciplinary Centre for Integration and Migration Research (**InZentIM**)
- Institute of East Asian Studies (**IN-EAST**)
- Institute of scientific key competences (**IwiS**)
- Käte Hamburger Kolleg/Centre for Global Cooperation Research (**KHK**)
- Centre for Teacher Education (**ZLB**)
- Centre for Logistics and Traffic (**ZLV**)
- Centre for Medical Biotechnology (**ZMB**)
- Centre for Water and Environmental Research (**ZWU**)
- Alliance for Research on East Asia (**AREA Ruhr**) with RUB
- Erwin L. Hahn Institute for Magnetic Resonance Imaging (**ELH**) with the Radboud University Nijmegen
- Institute for Advanced Study in the Humanities Essen (**KWI**) UA Ruhr

# Associated Institutes of the University

- German Textile Research Centre North-West (**DTNW**)
- Development Centre for Ship Technology and Transport Systems (**DST**)
- Institute of Energy and Environmental Technology (**IUTA**)
- Institute of Mobile and Satellite Communication Technology (**IMST**)
- Confucius Institute Metropolis Ruhr (**KI Ruhr**)
- Mercator Institute for China Studies (**MERICs**)
- IWW Water Centre (**IWW**)
- Rhine-Ruhr Institute for Social Research and Political Consulting (**RISP**)
- Salomon Ludwig Steinheim Institute (**StI**)
- Centre for Fuel Cell Technology (**ZBT**)
- Center for Studies on Turkey and Integration Research (**ZfTI**)

# Expenditures of Third-party funds

Total sum 157,0 mill. Euro  
(51,8 mill. Euro is for the Faculty of Medicine)



qualifying date: 31.12.2022

# University Alliance Ruhr(UA Ruhr)

**Unlimited possibilities:** The alliance connects the three universities of Bochum, Dortmund and Duisburg-Essen. It was founded in 2007 and has today

- more than 500 study courses, 120,000 students and 1,300 professors
- more than 16,000 graduates and 1,300 doctorates yearly
- about 1.4 milliards Euro budget volume yearly
- about 300 millions Euro third-party funds yearly
  
- **Joint Research Centres**                      KWI Institute for Advanced Study in the Humanities Essen  
Alliance for Research on East Asia (AREA Ruhr)
- **Joint Main Research Areas**              Materials Chain  
Ruhr Explores Solvation (RESOLV)
- **100 professors at Competence Field Metropolitan Research**

# AURORA

- is a network of 9 universities (UDE, Vrije Universiteit Amsterdam, University of Iceland, University of East Anglia, University Federico II of Naples, Universitat Rovira i Virgili, Universität Innsbruck, Palacký University Olomouc, Copenhagen Business School, Université Paris-Est Créteil)
- universities are excellent in research and dedicated to social responsibility and diversity

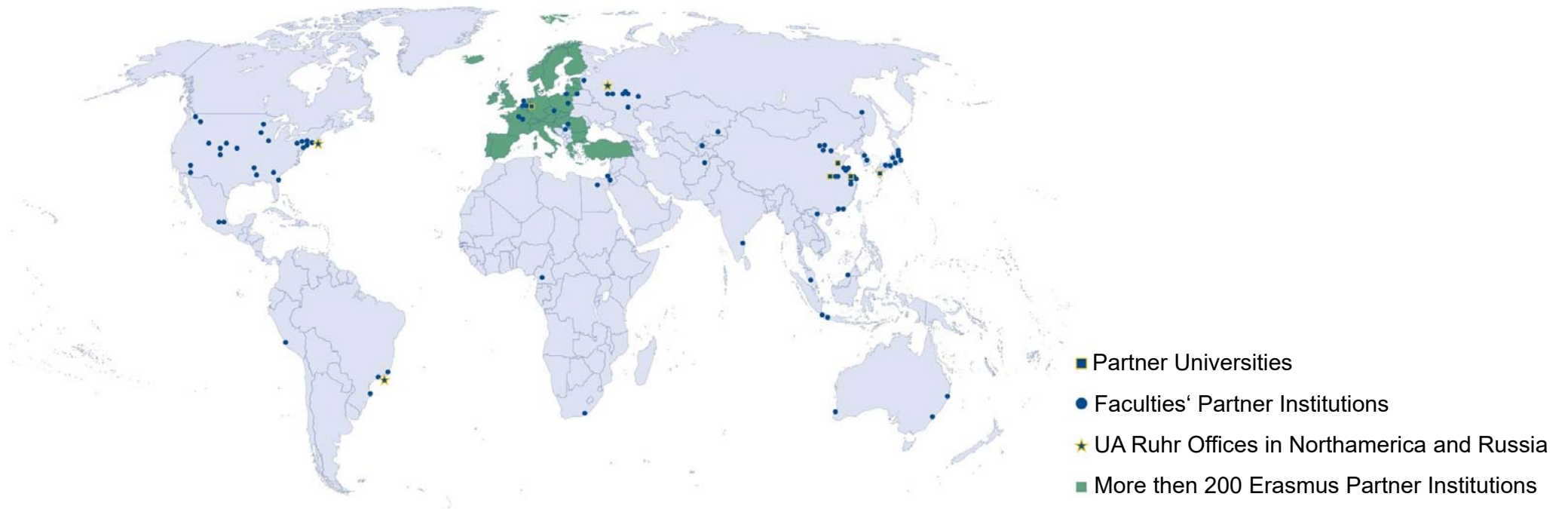
## AURORA's main idea and goals

- connects societal impact and relevance of research
- means learning from trusted partners
- increase visibility

**AURORA**



## 99 active partnerships worldwide



## Information and Counselling



- **Student Counselling and Academic Career Services**  
with more than 18,500 annual contacts
- **University Sports**  
1,500 courses per year
- **University Library**  
with 2,4 million print volumes; 300,000 hits on e-books
- **Center for Higher Education and Quality Development**  
more than 100 services for quality assurance, teaching and learning
- **Centre for Information and Media Services**  
with 30,000 interconnected systems
- **Centre for Teacher Education**  
2,500 work placements registered per year

For the general public

## Offers for everyone



- **Mercator-Professorship**  
e.g. Richard von Weizsäcker, Christiane Nüsslein-Volhard, Alice Schwarzer, Götz Werner, Margarethe von Trotta, Karl Kardinal Lehmann, Alfred Grosser, Joachim Gauck
- **Poet in Residence**  
e.g. Günter Grass, Judith Kuckart, Kathrin Röggla, Marion Poschmann, Klaus Modick, Lukas Bärfuss, Dorothee Elmiger & Reto Hännly, Christof Hamann
- **Scientist in Residence**  
e.g. Wilhelm Barthlott, Julian Nida-Rümelin, Yi Cui, Heinz-Elmar Tenorth, Alan Ashworth, Michael Batty, John E. Bowers, Seyla Benhabib, Jan Gulliksen
- **Further events**  
UniKids – lectures for children, Summer University, taster courses, competition for pupils “freestylephysics”



***Thank you for your attention.***

UNIVERSITÄT  
**DUISBURG  
ESSEN**

*Offen im Denken*