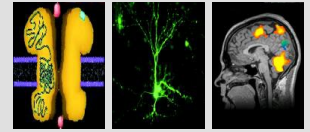


IGSN / SFB 1280 / BIOME
CONFERENCE



EXTINCTION LEARNING

23rd – 24th of April 2024

Veranstaltungszentrum, Ruhr University Bochum

Programme

April 23rd **9:15** **Welcome** - opening of the conference
Onur Güntürkün Speaker SFB 1280
Martin Hadamitzky Core Speaker BIOME

Session 1 **9:25** **Neural aspects of associative learning: Mechanisms and methods**
 Introduction: Julia Bihorac

9:30 **Matthew Larkum**
 Charité, Humboldt University, Berlin, Germany
NMDA spikes in layer 1 - orchestrating semantic learning

10:05 **Sarah Ayash**
 Leibniz Institute for Resilience Research, Mainz, Germany
Neural basis of resilience to social stress

10:40 **Coffee break / Poster Session / Brainstorming Session (1)**

12:00 **Florian Freudenberg**
 Department of Psychiatry, Psychosomatic Medicine and Psychotherapy, Goethe-University, Frankfurt am Main, Germany
From cells to behavior: understanding the molecular mechanisms of glutamatergic synapses in mental disorder-related learning and memory deficits

12:35 **Lunch break**



IGSN / SFB 1280 / BIOME Conference: **EXTINCTION LEARNING**

April 23rd - Afternoon

Session 2: 13:40 Comparative hippocampal memory formation

Introduction: Alaleh Sadraee

13:45 Tom Smulders

School of Psychology, Newcastle University, Newcastle upon Tyne, UK

Is spatial memory in birds with hippocampal specialization mediated by familiarity or recollection?

14:20 Hannah Payne

Mortimer B. Zuckerman Mind Brain Behavior Institute, Columbia University, New York, USA

Neural codes for physical and visual navigation in the hippocampus of food caching birds

14:55 Coffee break / Brainstorming Session (2)

15:45 Uwe Mayer

Center for Mind/Brain Sciences, University of Trento, Italy

Functional subdivisions of avian hippocampus based on immediate early gene studies.

16:20 individual meetings with RUB scientists



IGSN / SFB 1280 / BIOME Conference: EXTINCTION LEARNING

April 24th - Morning

Session 3 **9:20** **Translational and Behavioral Neuroscience**
Introduction: Jael Caviola

9:20 **Grant S. Shields**
Department of Psychological Science, University of Arkansas, Fayetteville, USA
Acute stress and cognitive control: understanding the effects and their relation to depression

9:55 **Marloes Henckens**
Department of Cognitive Neuroscience, Donders Institute for Brain, Cognition and Behaviour, Radboud University, Nijmegen, the Netherlands
Stressing the details: noradrenergic modulation of the neural mechanisms supporting memory detailedness

10:30 **Coffee break / Poster Session / Brainstorming Session (3)**

Session 4 **11:30** **Modelling neural dynamics**
Introduction: Behnam Ghazinouri

11:35 **Franziska Bröker**
Neuroscience Institute, Carnegie Mellon University, Pittsburgh, USA
Supervised and unsupervised learning in humans and machines

12:10 **Lunch break**



IGSN / SFB 1280 / BIOME Conference:
EXTINCTION LEARNING

April 24th - Afternoon

Session 4

Modelling neural dynamics (continued)

13:15

Diana Burk

Learning & Decision Making, National Institute of Mental Health (NIMH), Bethesda, USA

Using reinforcement models to capture behavioral features of threat learning in humans

13:50

Lorenzo Fontolan

Turing Centre for Living Systems (CENTURI), Aix-Marseille University, Marseille, France

Neural mechanisms of memory-guided behaviour

14:25

Brainstorming Session (4)

